



The Breast Implant May Delay Primary Coronary Intervention Case Report

Wael Abdulelah Mohammed, MD, MRCPUK, MSc

Department of Cardiology in North Wales Cardiac Center, Ysbyty Glan Clwyd Hospital, Betsi Cadwaladr University Health Board, Rhyl, United Kingdom

*Corresponding author: Wael Mohammed, MD, MRCPUK, MSc in Cardiovascular Preventive Medicine, University of South Wales; wistman@hotmail.com; wael.mohammed2@wales.nhs.uk

Received 28 June 2022;

Accepted 25 July 2022;

Published 27 July 2022

Introduction

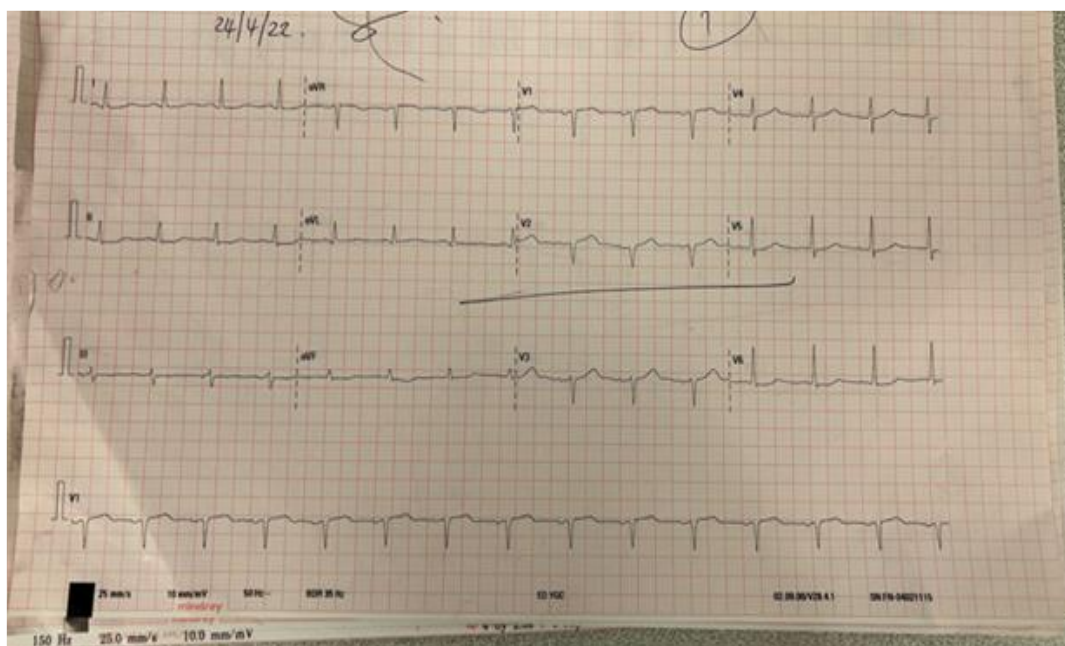
An Electrocardiography test is a reflection of the heart's electrical activity, always being used in the emergency department to figure out the cause of chest pain.

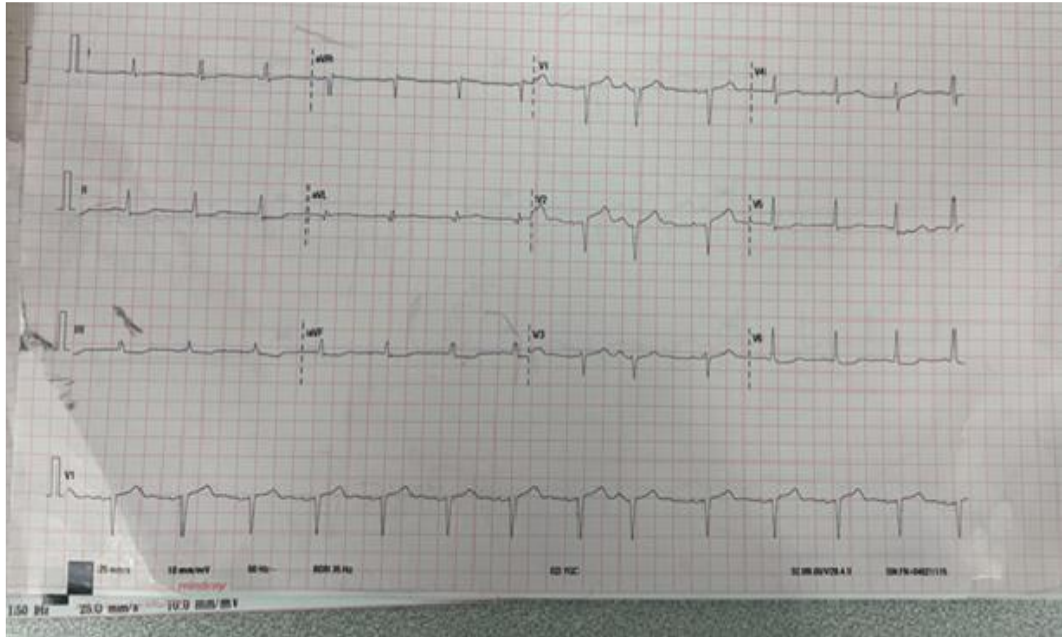
In terms of improving the quality and patient safety, investigators from Europe highlighted that breast implants are associated with abnormal ECG recordings, and suggested having an ECG before a breast implant procedure, which can be kept on an individual file and used for future comparison if needed. (Sok Sithikun Bun, et al 2017).

Case report

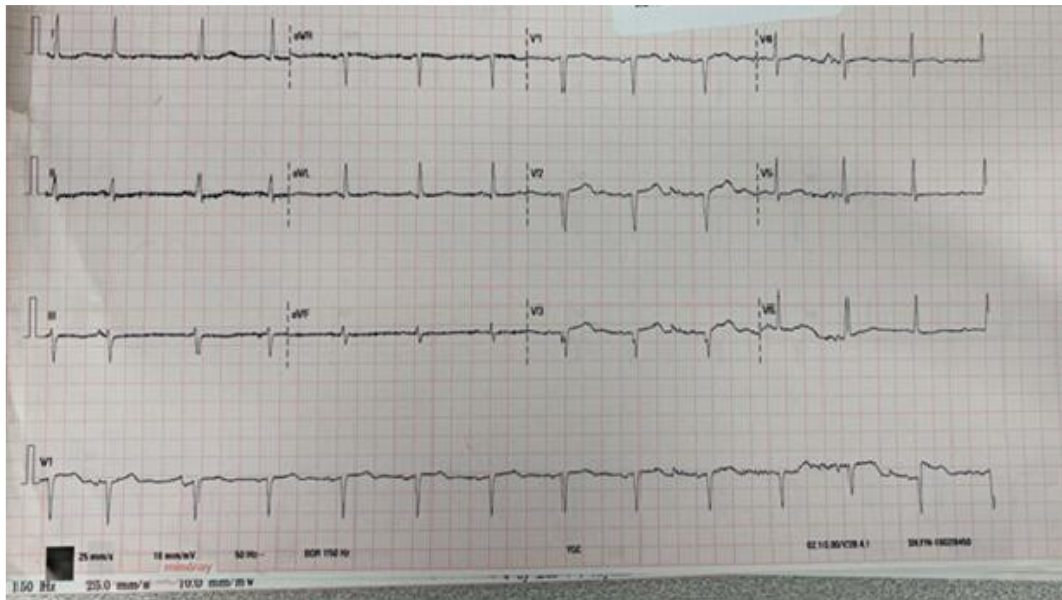
A 59-year-old radiology assistant, who has silicone breast implantation, presented to A&E with chest pain at around 09:55 am

and was admitted to CCU 55 minutes after the onset of symptoms. Her chest pain was exertional, retrosternal, and radiated to the left arm. While the patient was waiting in the triage room, 1st and 2nd Electrocardiography were not met the primary PCI criteria (**Figures 1 and 2**), and 1st Troponin was 486. Thus, she was admitted with non-ST elevation myocardial infarction, subsequently, a combination of aspirin with ticagrelor and fondaparinux was commenced. Upon arrival at CCU, the initial Electrocardiography (**Figure 3**) was not convincing, thereafter, we keep adjusting the Electrocardiography pads and leads away from the round area of the implanted breast and a Wellens syndrome (reflecting ostial to proximal LAD lesion) was recorded (**Figures 4 and 5**). Hence, the patient underwent coronary angiography, which was consistent with later findings and a stent was placed successfully into the left anterior descending coronary artery (**Figures 6, 7, 8, 9, 10**).

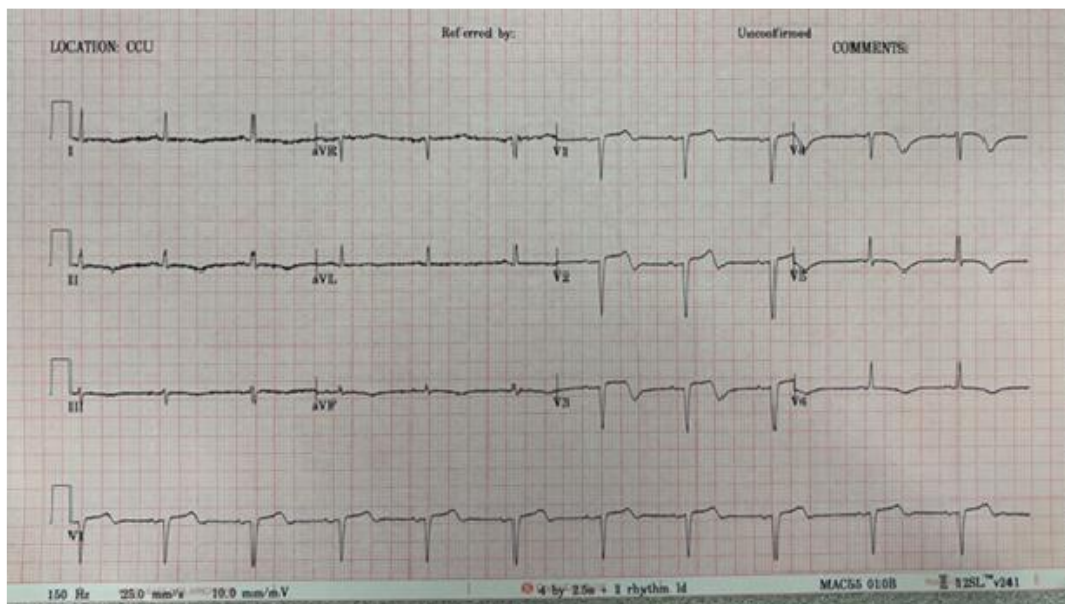


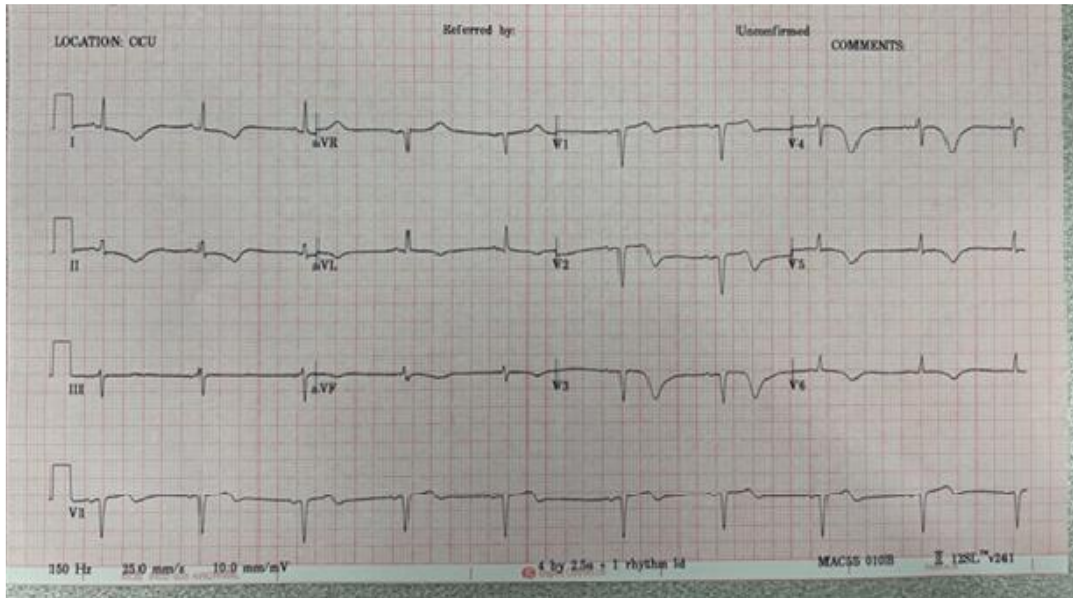


Figures 1, 2: ECG

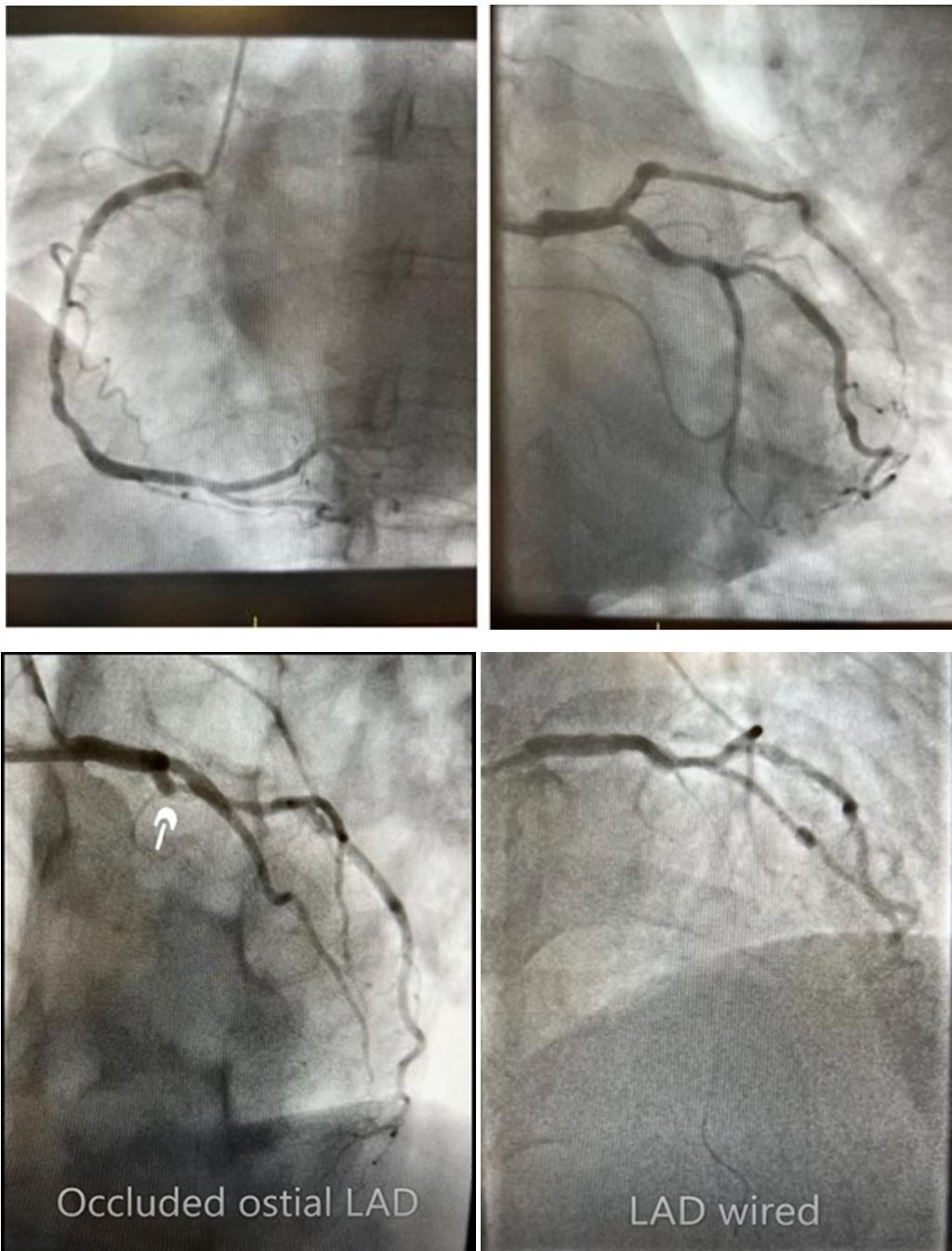


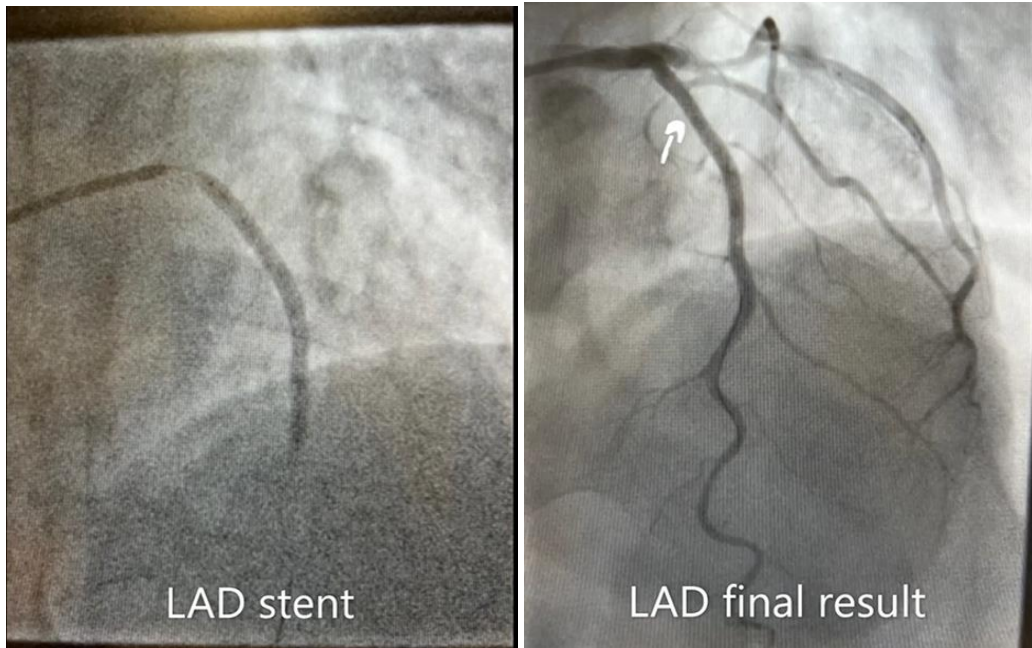
Figures 3: ECG





Figures 4, 5: ECG





Figures 6, 7, 8, 9, 10: Coronary angiography

Discussion

ECGs are used to diagnose acute myocardial infarction by certain criteria, such as ST-segment elevation, new left bundle branch block, and other high-risk features like diffuse T waves inversion and ST elevation in AVR. Hence, necessitate urgent coronary revascularization.

According to the plastic surgeon statistical data, breast implantation is one of the most common cosmetic surgeries in the world, which represents a 4% increase from the rates observed since 2010. In addition to being used cosmetically, breast implants are used to reconstruct the breasts after mastectomy for breast cancer, which contributes to the high prevalence of these procedures. Currently, the three most commonly used breast implants are silicone implants (these are filled with silicone gel), double-lumen silicone implants (these have two chambers, one filled with saline

and the other with silicone gel), and saline implants (these have a silicone outer shell, but are filled with saline).

Based on that, the breast implant materials may act as a barrier and interfere with the transmission of the true electrical signals from the heart to the ECG recording machine. Ultimately, that may result in a serious outcome if the reperfusion strategy or decision gets delayed upon the initial ECGs interpretation.

Conclusion

All physicians should be aware that ECG interpretation can be misleading in patients with breast implants. In case of any doubts regarding the diagnosis, ECG lead adjustment can be tried multiple times, in addition, serial serum troponin needs to be performed depending on the patient's clinical symptoms.

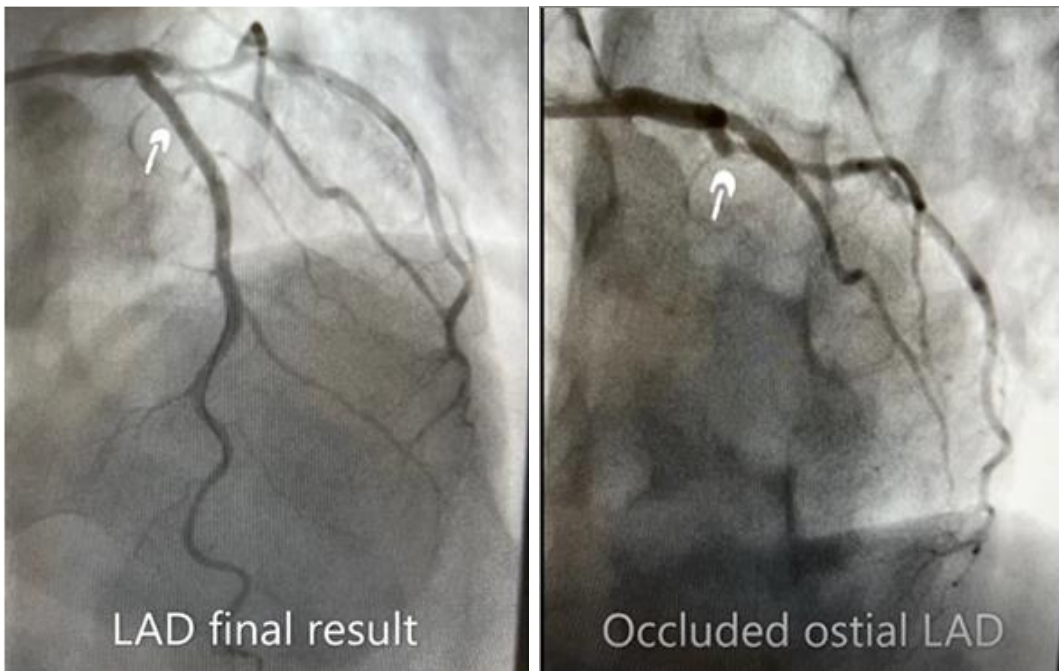


Figure 11: LAD pre and after revascularization

Funding

None declared.

Conflict of interest

None declared.

Author contributions

Wael Mohammed, dealt with the patient; conceptualization; writing original draft; writing, review, and editing.

Disclosures

None declared.

Patient consent

Obtained.

Acknowledgments

Wael Mohammed is supported by the north Wales cardiac center.

References

- [1] Sok Sithikun Bun, (2017). Breast implants may impede ECG and lead to false heart attack diagnosis. <https://www.escardio.org/The-ESC/Press-Office/Press-releases/breast-implants-may-impede-ecg-and-lead-to-false-heart-attack-diagnosis>(Breast implants may impede ECG and lead to fa | EurekAlert!, 2017)
- [2] L.B. Lu, et al. atypical chest pain syndrome in patients with breast implants South. Med. J., 87 (1994), pp. 978-984

- [3] N. Kossovsky, et al. Experimental demonstration of the immunogenicity of silicone-protein complexes J. Biomed. Mater. Res., 21 (1987), pp. 1125-1133
- [4] Juliane Schierbeck, et al. Silicone implant incompatibility syndrome (SIIS) in a 57-year-old woman with a unilateral silicone breast implant. BMJ Case Report. (2017), 10.1136/bcr-2016-218709
- [5] Idan Goren, et al. Autoimmune/inflammatory syndrome induced by adjuvant (ASIA) evolution after silicone implants. Who is at risk? Clin. Rheumatology., 34 (2015), pp. 1661-1666. 10.1007/s10067-015-2931-0.
- [6] Mintsje de Boer, et al. Is explanation of silicone breast implants useful in patients with complaints? Immunol. Res., 65 (2017), pp. 25-36. 10.1007/s12026-016-8813-y.



Open Access This article is licensed under a Creative Commons Attribution 4.0 International License, which permits use, sharing, adaptation, distribution and reproduction in any medium or format, as long as you give appropriate credit to the original author(s) and the source, provide a link to the Creative Commons license, and indicate if changes were made. The images or other third-party material in this article are included in the article's Creative Commons license, unless indicated otherwise in a credit line to the material. If material is not included in the article's Creative Commons license and your intended use is not permitted by statutory regulation or exceeds the permitted use, you will need to obtain permission directly from the copyright holder. To view a copy of this license, visit <https://creativecommons.org/licenses/by/4.0/>.

© The Author(s) 2021